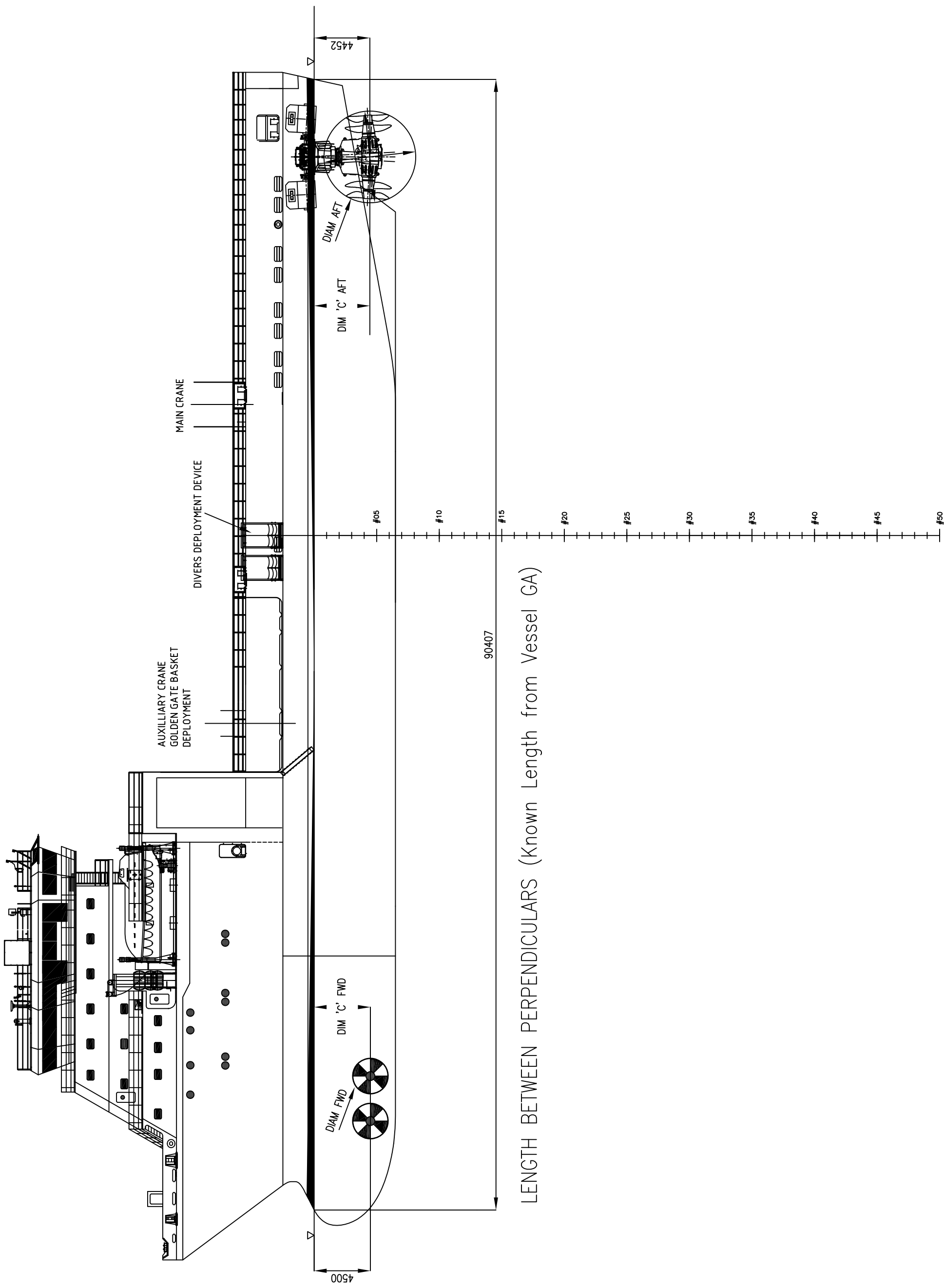


Title: VESSEL EXAMPLE DRAWING FOR SUPERVISOR SCALING UEX CALC CHECKS
 DIVERS DEPLOYMENT DEVICE 5 - 50 MSW

Sketch No.: NS-SK-UEX-001
 Sheet: 1 of 3

Rev No.: C1





LENGTH BETWEEN PERPENDICULARS (Known Length from Vessel GA)

Title:.

VESSEL EXAMPLE DRAWING FOR SUPERVISOR SCALING UEX CALC CHECKS
 DIVERS DEPLOYMENT DEVICE 5 – 50 MSW

Sketch No.:

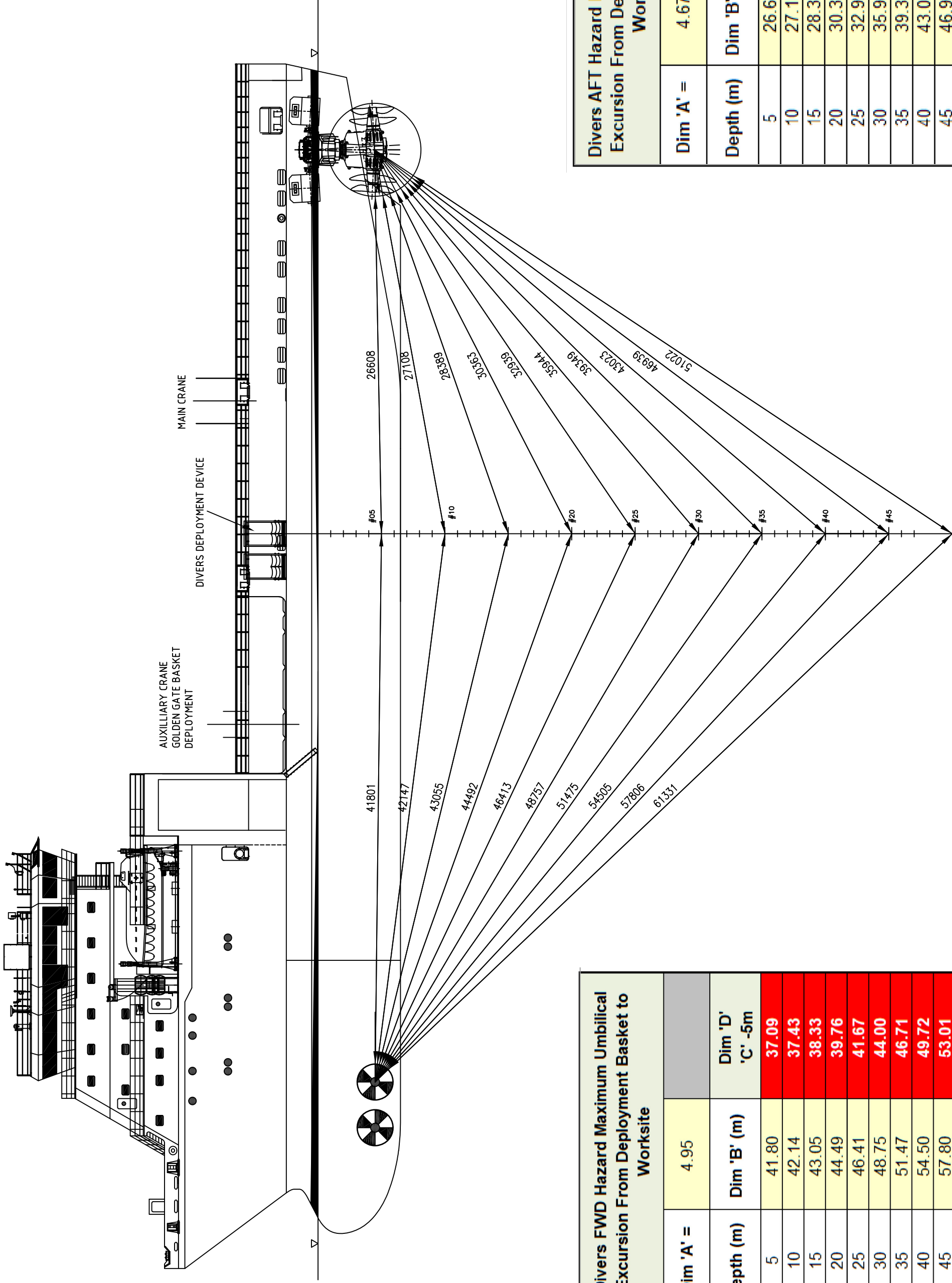
NS-SK-UEX-001

Sheet:.

2 of 3

Rev No.:

C1



Divers FWD Hazard Maximum Umbilical Excursion From Deployment Basket to Worksite

Dim 'A' =	4.95	Dim 'D' 'C' -5m
Depth (m)	Dim 'B' (m)	Dim 'D' 'C' -5m
5	41.80	37.09
10	42.14	37.43
15	43.05	38.33
20	44.49	39.76
25	46.41	41.67
30	48.75	44.00
35	51.47	46.71
40	54.50	49.72
45	57.80	53.01
50	61.33	56.53

Divers AFT Hazard Maximum Umbilical Excursion From Deployment Basket to Worksite

Dim 'A' =	4.67	Dim 'D' 'C' -5m
Depth (m)	Dim 'B' (m)	Dim 'D' 'C' -5m
5	26.60	22.01
10	27.10	22.50
15	28.38	23.76
20	30.36	25.72
25	32.93	28.26
30	35.94	31.24
35	39.34	34.62
40	43.02	38.27
45	46.93	42.16
50	51.02	46.23

Title:..

ENGINEERS MAXIMUM UMBILICAL EXCURSION CALCULATIONS
 DIVERS DEPLOYMENT DEVICE (VESSEL SIDE) 5 - 50 MSW

Sketch No.: NS-SK-UEX-001

Sheet: 3 of 3

Rev No.: C1

